

# JARGY CO., LTD.

## Test Report

Model : CBL-HFPD3igMBS-3m  
Camera Brand Name : Matrix Vision

Ver : 1.0

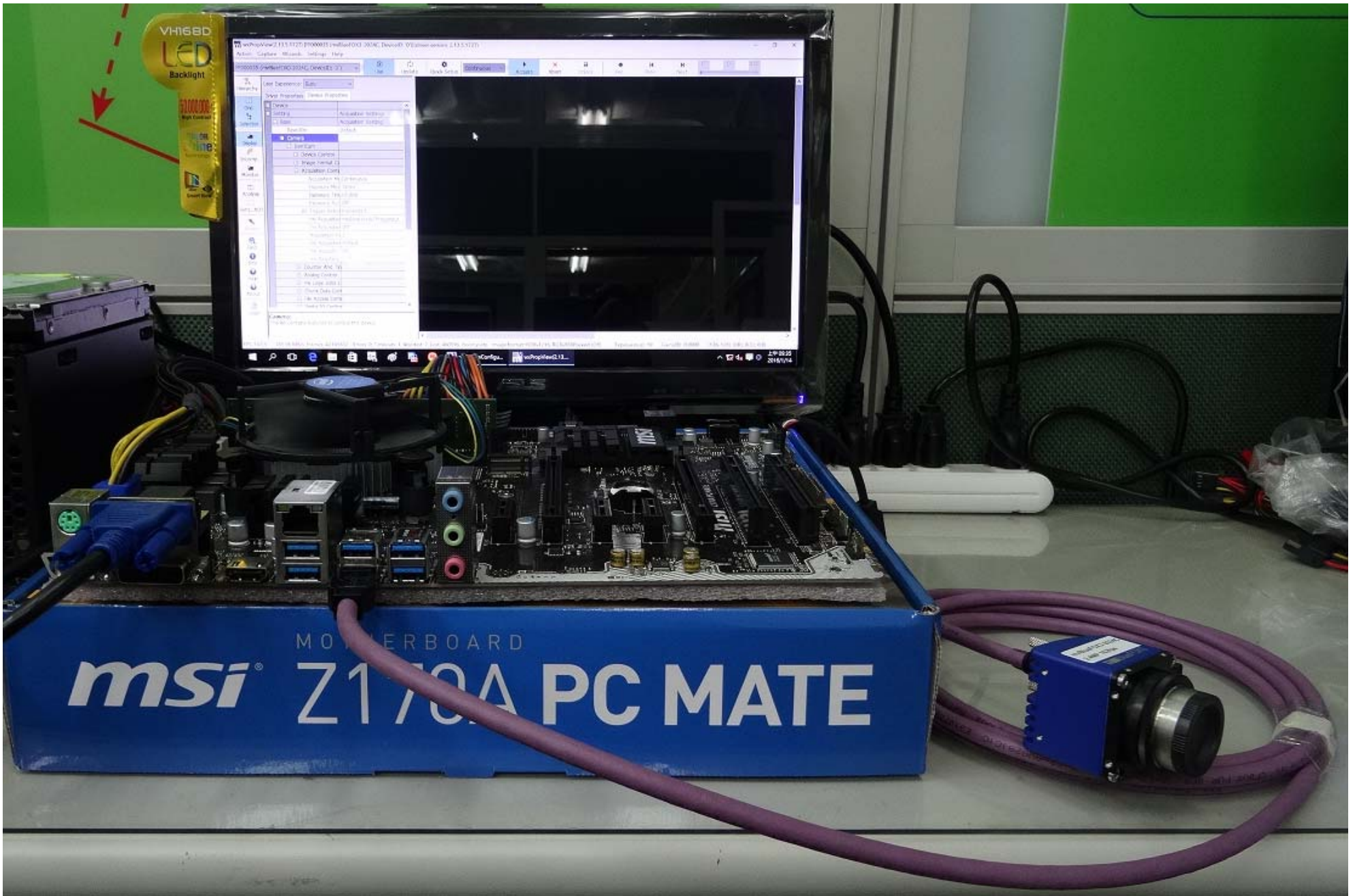
Date : 2016/1/14

### Test Platform

Type	PC		
Model	msi Z170A PC MATE		
OS	Windows 10 Pro 64-bit		
CPU	Intel Core i5-6400		
HDD	SATA III 1TB		
RAM	DDR4 4GB		
USB 3.0	PCH 6 Ports(Intel Z170 Native)		

Tested Camera : mvBlueFOX3-2024C

Tested time : 72h



FF000035 (mvBlueFOX3-2024C, DeviceID: '0') Use Update Quick Setup Continuous Acquire Abort Unlock

Hierarchy

User Experience: Guru

Driver Properties Device Properties

Device	
Setting	Acquisition Settings
Base	Acquisition Setting
BasedOn	Default
Camera	
GenICam	
Device Control	
Image Format Co	
Acquisition Cont	
Acquisition Me	Continuous
Exposure Mod	Timed
Exposure Tim	10.000
Exposure Aut	Off
Trigger Select	FrameStart
mv Acquisition	mvDeviceLinkThroughput
mv Acquisition	Off
Acquisition Fr	1
mv Acquisition	Default
mv Acquisition	55
mv Resulting	164.500
Counter And Tin	
Analog Control	
mv Logic Gate C	
Chunk Data Conf	
File Access Cont	
Digital IO Control	

**Camera:**  
This list contains features to control the device



# JARGY CO., LTD.

## Test Report

Model : CBL-HFD3igMBS-5m  
Camera Brand Name : Matrix Vision

Ver : 1.0

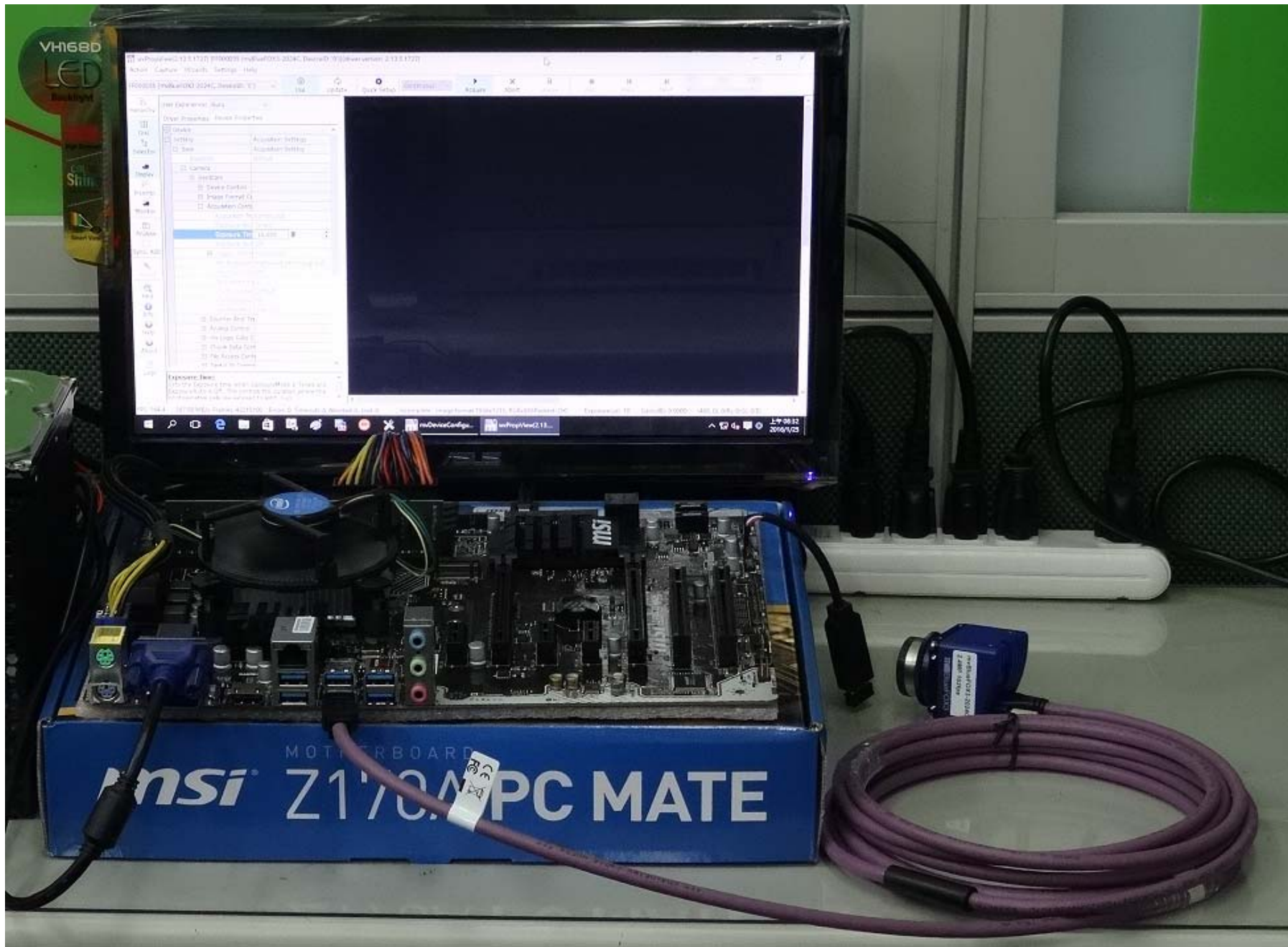
Date : 2016/1/25

### Test Platform

Type	PC		
Model	msi Z170A PC MATE		
OS	Windows 10 Pro 64-bit		
CPU	Intel Core i5-6400		
HDD	SATA III 1TB		
RAM	DDR4 4GB		
USB 3.0	PCH 6 Ports(Intel Z170 Native)		

Tested Camera : mvBlueFOX3-2024C

Tested time : 72h



FF000035 (mvBlueFOX3-2024C, DeviceID: '0') Use Update Quick Setup Continuous Acquire Abort Unlock

Hierarchy

User Experience: Guru

Driver Properties Device Properties

Device	
Setting	Acquisition Settings
Base	Acquisition Setting
BasedOn	Default
Camera	
GenICam	
Device Control	
Image Format Co	
Acquisition Cont	
Acquisition Me	Continuous
Exposure Mod	Timed
Exposure Tim	10.000
Exposure Aut	Off
Trigger Select	FrameStart
mv Acquisition	mvDeviceLinkThroughput
mv Acquisition	Off
Acquisition Fr	1
mv Acquisition	Default
mv Acquisition	55
mv Resulting	164.500
Counter And Tin	
Analog Control	
mv Logic Gate C	
Chunk Data Cont	
File Access Cont	
Digital IO Contro	

Exposure Time:  
Sets the Exposure time when ExposureMode is Timed and ExposureAuto is Off. This controls the duration where the photosensitive cells are exposed to light. (us)

PS: 164.1 | 386.34 MB/s Frames: 42223171 | Errors: 0, Timeouts: 0, Aborted: 0, Lost: 0, Incomplete: 0 | Image format 1936x1216, RGBx888Packed (OK)

# JARGY CO., LTD.

## Test Report

Model : CBL-HFD3igMBS-8m  
Camera Brand Name : Matrix Vision

Ver : 1.0

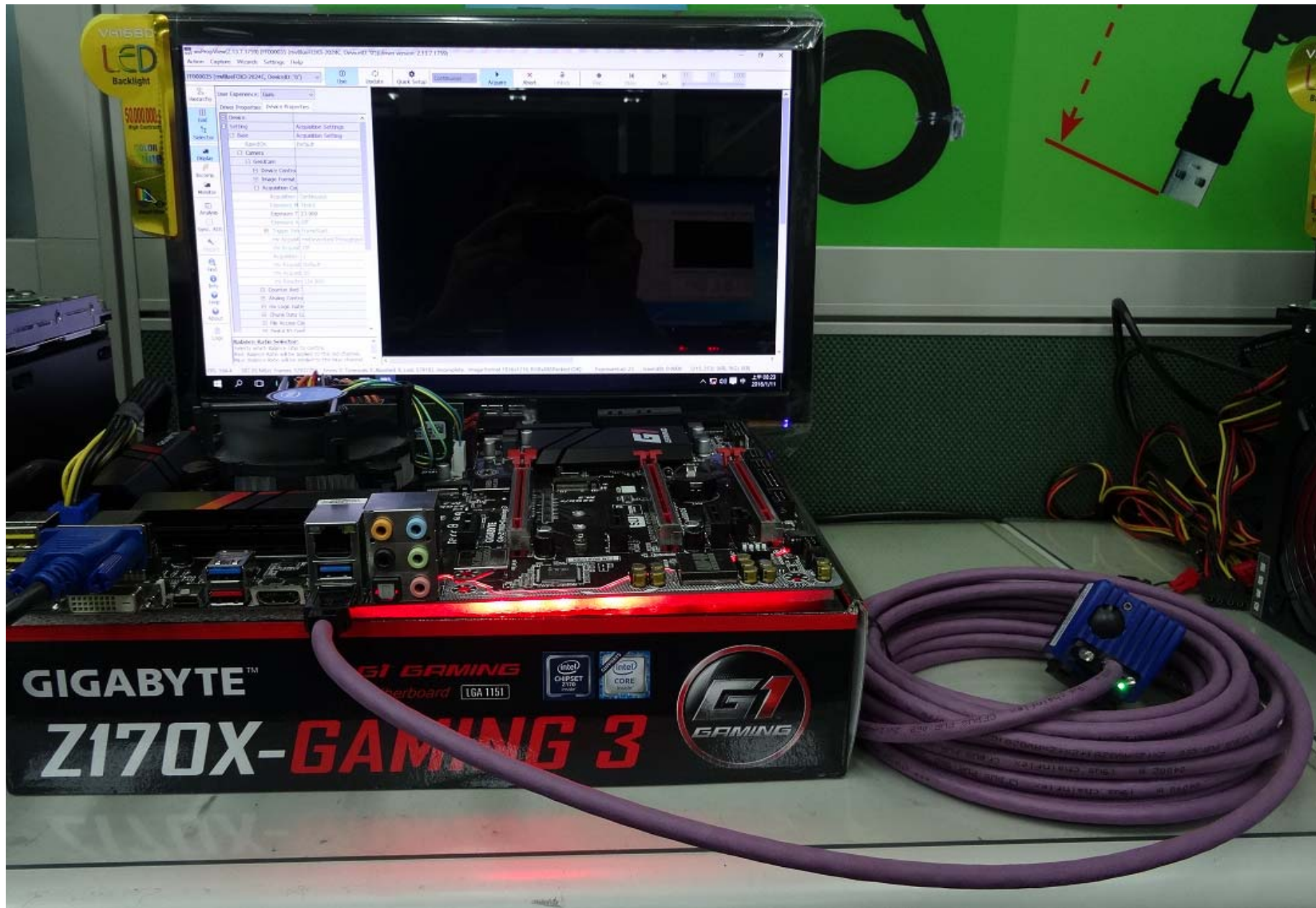
Date : 2016/1/11

### Test Platform

Type	PC		
Model	GIGABYTE GA-Z170X-Gaming 3		
OS	Windows 10 Pro 64-bit		
CPU	Intel Core i5-6400		
HDD	SATA III 1TB		
RAM	DDR4 4GB		
USB 3.0	PCH 6 Ports(Intel Z170 Native)		

Tested Camera : mvBlueFOX3-2024C

Tested time : 90h





FF000035 (mvBlueFOX3-2024C, DeviceID: '0') Use Update Quick Setup Continuous Acquire Abort Unlock

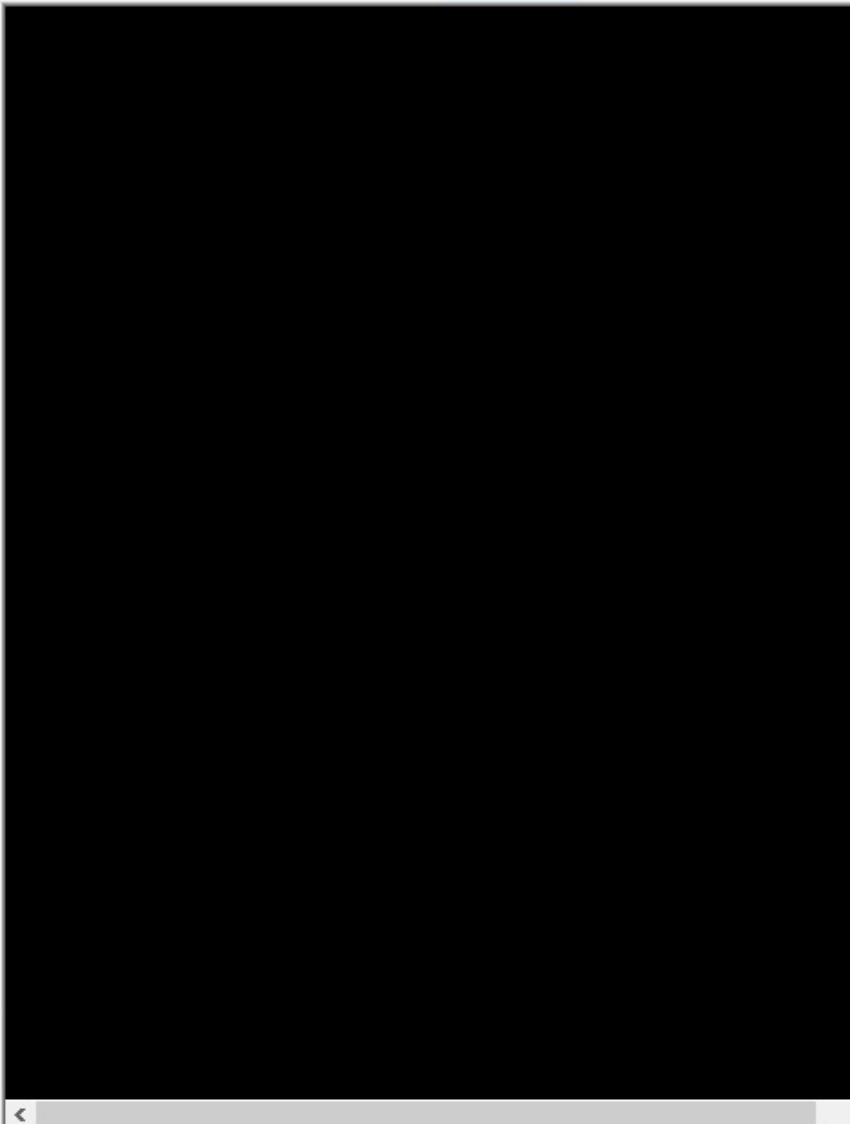
Hierarchy

User Experience: Guru

Driver Properties Device Properties

Device	
Setting	Acquisition Settings
Base	Acquisition Setting
BasedOn	Default
Camera	
GenICam	
Device Control	
Image Format	
Acquisition Control	
Acquisition	Continuous
Exposure Mode	Timed
Exposure Time	23.000
Exposure Auto	Off
Trigger Selection	FrameStart
mv Acquisition Throughput	mvDeviceLinkThroughput
mv Acquisition	Off
Acquisition	1
mv Acquisition	Default
mv Acquisition	55
mv Resulting	154.800
Counter And	
Analog Control	
mv Logic Gate	
Chunk Data Control	
File Access Control	
Digital IO Control	

**Balance Ratio Selector:**  
Selects which Balance ratio to control.  
Red: Balance Ratio will be applied to the red channel.  
Blue: Balance Ratio will be applied to the blue channel.



# JARGY CO., LTD.

## Test Report

Model : CBL-HFD3igMBS-10m  
Camera Brand Name : Matrix Vision

Ver : 1.0

Date : 2016/1/7

### Test Platform

Type	PC		
Model	GIGABYTE GA-Z170X-Gaming 3		
OS	Windows 10 Pro 64-bit		
CPU	Intel Core i5-6400		
HDD	SATA III 1TB		
RAM	DDR4 4GB		
USB 3.0	PCH 6 Ports(Intel Z170 Native)		

Tested Camera : mvBlueFOX3-2024C

Tested time : 72h



GIGABYTE™

*G1 GAMING*  
Motherboard LGA 1151



**Z170X-GAMING 3**

FF000035 (mvBlueFOX3-2024C, DeviceID: '0') [Use] [Update] [Quick Setup] [Continuous] [Acquire] [Abort] [Unlock]

- Hierarchy
- Grid
- Selector
- Display
- Incomp.
- Monitor
- Analysis
- Sync. AOI
- Wizard
- Find
- Info
- Help
- About
- Logs

User Experience: Guru

Driver Properties | Device Properties

Device	
Setting	Acquisition Settings
Base	Acquisition Setting
BasedOn	Default
Camera	
GenICam	
Device Control	
Image Format Control	
Acquisition Control	
Acquisition Mode	Continuous
Exposure Mode	Timed
Exposure Time	10.000
Exposure Auto	Off
Trigger Selector	FrameStart
mv Acquisition Frame	mvDeviceLinkThroughput
mv Acquisition Frame	Off
Acquisition Frame Co	1
mv Acquisition Mem	Default
mv Acquisition Mem	55
mv Resulting Frame	164.500
Counter And Timer Cor	
Analog Control	
mv Logic Gate Control	
Chunk Data Control	
File Access Control	
Digital IO Control	

**Device:**  
This list contains device related properties, which can be accessed without the need to open the device itself



FPS: 164.4 | 386.98 MB/s | Frames: 42398113 | Errors: 0, Timeouts: 0, Aborted: 0, Lost: 0, Incomplete: 0 | Image format 1936x1216, RGBx888Packed (OK)